

# Aerial Work Platforms

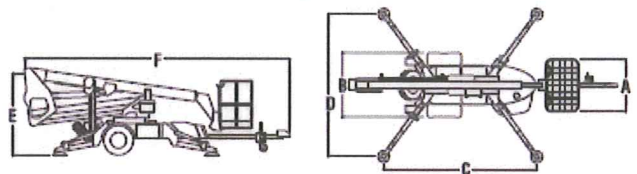
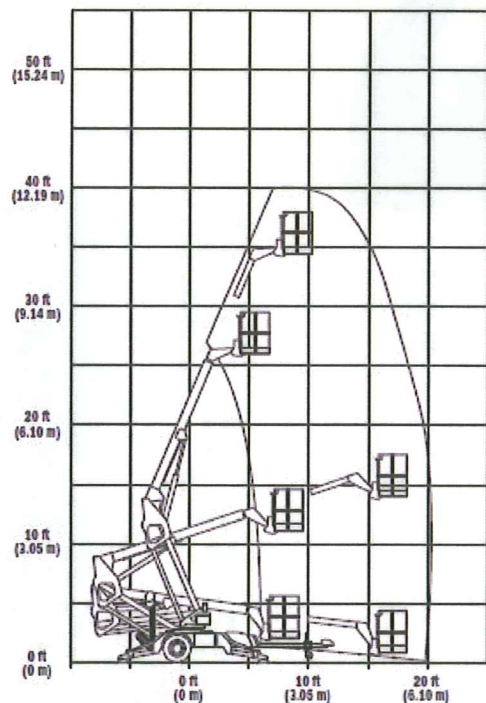
## Towable Manlift



The Tow-Pro® Series lets you tackle the same jobs as the other electric boom lifts, with an easier option for transportation. With the standard combination hitch, industry-leading towing speed and hydraulic auto-leveling outriggers, you can have the Tow-Pro to the job site and working in no time.

You can tackle a variety of jobs including residential maintenance, construction, pressure washing, tree trimming, exterior painting and maintenance tasks.

### T350 SERIES



#### 2" Ball Hitch, with surge brakes

Ref	Make	Model	Unit	Outrigger Footprint	Working Height	Capacity	Platform Size	Horizontal Reach	Width	Height Stowed	Length Stowed	Weight	Day	Week	4 Week
JLG	T350	2571		Length 11'6" Width 10' 5"	41	500#	30" x 48"	13' 6"	4' 9"	6' 6"	21' 4"	3400#	195	535	1440

