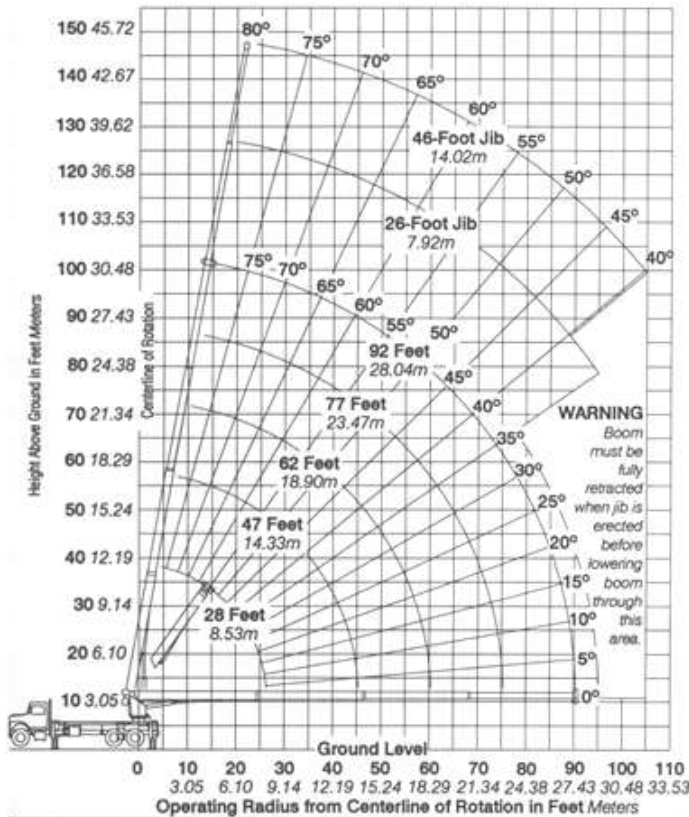


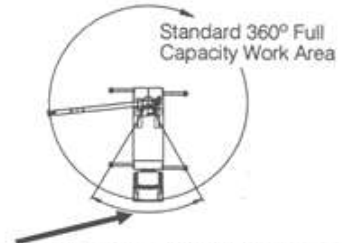
# 28-ton Boom Truck- #105

## MODEL M2892S

### M2892S RANGE DIAGRAM



### AREA OF OPERATION



**WARNING** The front tires must be in contact with the ground, and the machine level, when operating in this area.

### ALLOWABLE LINE PULL

1 PART LINE	2 PART LINE	3 PART LINE	4 PART LINE	5 PART LINE	6 PART LINE	7 PART LINE	
							Anti-Two-Block system must be in good operating condition before operating crane. Refer to owner's manual. Keep at least 3 wraps of load on drum at all times.
8500 lb 3856 kg	17000 lb 7711 kg	25500 lb 11567 kg	34000 lb 15422 kg	42500 lb 19278 kg	51000 lb 23133 kg	60000 lb 27401 kg	5/8" (14.29mm) 605 MRC (3.5:1 SF) 29750 lb (13494 kg) Minimum breaking strength.
7400 lb 3357 kg	14800 lb 6715 kg	22200 lb 10070 kg	29600 lb 13426 kg	37000 lb 16783 kg	44400 lb 20140 kg	51800 lb 23496 kg	5/8" (14.29mm) Rotation resistant (5.0:1 SF) 37000 lb (16783 kg) Minimum breaking strength.

### WEIGHTS

Total Crane w/mounting hardware & hydraulic fluid.....	22,700 lb . 10,297 kg
26-Foot 7.93m Fixed Length Jib.....	820 lb ..... 372 kg
46-Foot 14.02m Telescopic Jib.....	1,230 lb ..... 558 kg
14-Foot 4-inch 4.37m Steel or Wood Bed.....	1,200 lb ..... 544 kg

### DEDUCTIONS

Auxiliary Block.....	50 lb ..... 22.68 kg	Triple-Sheave Load Block.....	450 lb..... 204.12 kg
Auxiliary Sheave.....	50 lb ..... 22.68 kg	Hose Reel.....	140 lb..... 63.50 kg
Overhaul Ball.....	180 lb ..... 81.65 kg	Swing-Around Jib (Stowed).....	See Load Rating Chart
Single-Sheave Load Block.....	260 lb ..... 117.93 kg		

O outriggers and stabilizers fully extended and machine level.

### M2892S LOAD RATING CHART

Meets ANSI B30.5 Requirements.

Operating Radius	BOOM LOAD RATINGS						JIB LOAD RATINGS									
	28 Feet 8.53 Meters		47 Feet 14.33 Meters		62 Feet 18.90 Meters		77 Feet 23.47 Meters		92 Feet 28.04 Meters		26 Foot 7.92 Meters Fixed Jib		26 Foot 7.92 Meters Telescopic Jib		46 Foot 14.02 Meters	
Feet Meters	lb kg	lb kg	lb kg	lb kg	lb kg	lb kg	lb kg	lb kg	lb kg	lb kg	lb kg	lb kg	lb kg	lb kg	lb kg	
5 1.52	79° 56,000 25,401															
8 2.44	72° 39,171 17,768															
10 3.05	68° 32,980 14,959	78° 20,500 9,299														
12 3.66	63° 28,520 12,936	75° 20,500 9,299	79° 20,500 9,299													
15 4.57	58° 23,690 10,748	71° 20,500 9,299	77° 20,460 9,281	80° 15,900 7,212												
20 6.10	42° 17,240 7,820	65° 16,650 7,552	72° 15,720 7,130	76° 13,540 6,142	79° 10,200 4,627											
25 7.62	21° 12,550 5,693	58° 12,930 5,865	67° 12,700 5,761	72° 11,710 5,312	76° 9,290 4,214	79° 5,600 2,540	79° 5,400 2,449									
30 9.14		50° 9,990 4,531	62° 10,100 4,581	68° 10,060 4,559	73° 8,330 3,778	77° 5,300 2,404	77° 5,100 2,313	79° 3,400 1,542								
35 10.67		41° 7,960 3,611	56° 8,070 3,660	64° 8,130 3,688	70° 7,320 3,320	75° 4,960 2,250	75° 4,700 2,132	77° 3,300 1,497								
40 12.19		30° 6,470 2,935	50° 6,590 2,989	60° 6,650 3,016	66° 6,460 2,930	72° 4,490 2,054	72° 4,230 1,929	76° 3,200 1,452								
45 13.72			43° 5,460 2,477	55° 5,520 2,504	63° 5,560 2,522	70° 4,080 1,851	70° 3,820 1,733	74° 3,040 1,379								
50 15.24			36° 4,570 2,073	50° 4,630 2,100	59° 4,670 2,118	67° 3,710 1,683	67° 3,440 1,560	72° 2,800 1,270								
55 16.76			26° 3,840 1,742	45° 3,910 1,774	55° 3,950 1,792	65° 3,380 1,533	65° 3,100 1,406	69° 2,630 1,193								
60 18.28				39° 3,320 1,506	51° 3,360 1,524	62° 3,080 1,397	62° 2,810 1,275	67° 2,480 1,125								
65 19.81				32° 2,760 1,252	46° 2,810 1,275	59° 2,820 1,279	59° 2,540 1,152	65° 2,310 1,048								
70 21.34				24° 2,290 1,039	42° 2,340 1,061	56° 2,470 1,120	56° 2,180 989	62° 2,110 957								
75 22.86					36° 1,940 880	53° 2,070 939	53° 1,770 803	60° 1,940 880								
80 24.38					30° 1,600 726	50° 1,720 780	50° 1,430 649	58° 1,770 803								
85 25.91						22° 1,300 590	46° 1,420 644	46° 1,130 513	55° 1,580 717							
90 27.43							42° 1,160 526	42° 870 395	52° 1,320 599							
95 28.96							38° 930 422	38° 630 276	49° 1,080 490							
100 30.48									46° 870 395							
105 32.00									43° 680 308							
7300049-001	460 209 600 273	270 122 410 186	210 95 310 141	170 77 250 113	140 64 210 95	Deductions for stowed fixed jib						Deductions for stowed telescopic jib				

G.C. Hudson Supply Limited 613-342-4578 \* 800-267-8157 \* Fax 613-342-4702

Prices subject to change without notice

FOB our yard

Items may not be exactly as illustrated

November 2010